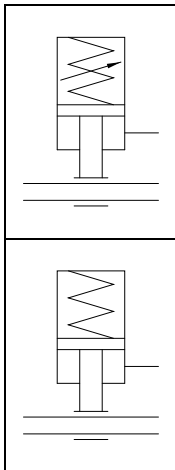


A close-up photograph of industrial machinery, likely a locking mechanism, with a blue color overlay. The image shows several cylindrical components and threaded rods. The text 'PWB PASSIVE LOCKING UNITS' is overlaid in white on the left side of the image.

**PWB**  
**PASSIVE LOCKING**  
**UNITS**

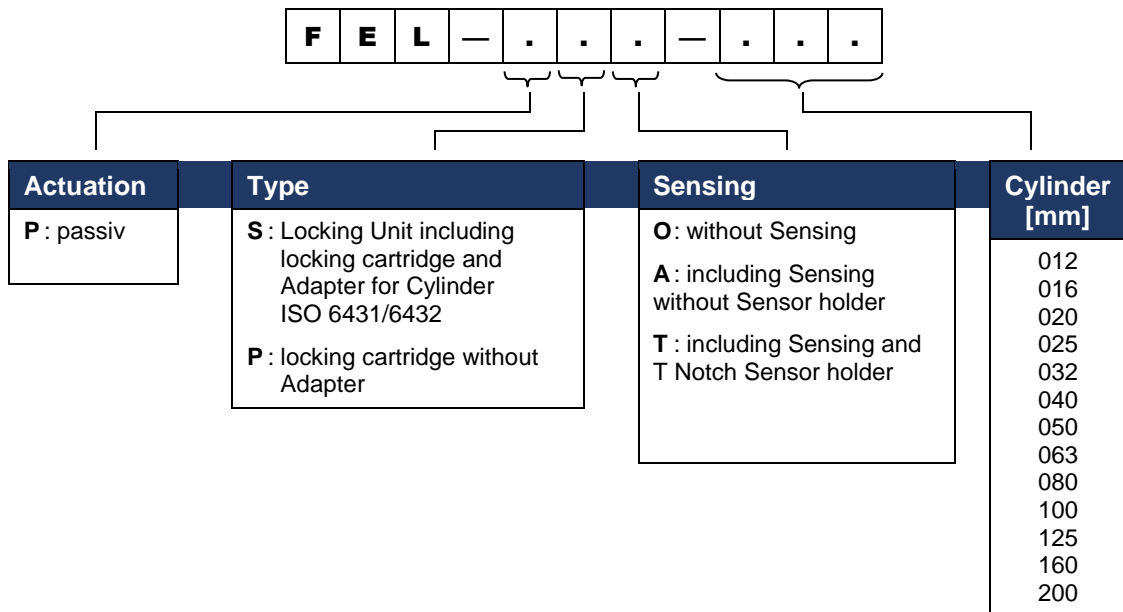


<b>Features</b>	As passive version by means of spring force and opening by pressurization. Holding round material such as piston rods, guides, etc. in any position. They are attached to cylinders by means of appropriate adapters.
-----------------	---

<b>Advantages</b>	<ul style="list-style-type: none"> <li>• short response time and high switching frequency possible</li> <li>• long service life thanks to exact guidance of the clamps in the housing</li> <li>• exactly reproducible positioning due to the use of special brass, extremely low wear on the clamps</li> <li>• automatisches, sicheres Halten bei Energieausfall - powerless hold!</li> <li>• Support for high loads at the pneumatic cylinder</li> </ul>
-------------------	---

<b>Version</b>	<b>passiv</b> = hold whit spring Force release whit compressed air												
<b>Operating Pressure</b>	4 to 10 Bar												
<b>Cylinder Ø mm</b>	12	16	20	25	32	40	50	63	80	100	125	160	
<b>Line Connection</b>	M5	M5	M5	M5	G <sup>1</sup> / <sub>8</sub> "	G <sup>1</sup> / <sub>8</sub> "	G <sup>1</sup> / <sub>8</sub> "	G <sup>1</sup> / <sub>8</sub> "	G <sup>1</sup> / <sub>8</sub> "	G <sup>1</sup> / <sub>8</sub> "	G <sup>1</sup> / <sub>8</sub> "	G <sup>1</sup> / <sub>4</sub> "	
<b>Environmental Temperature</b>	max. +80°C / 176° Fahrenheit												
<b>Medium Temperature</b>	max. +80°C / 176° Fahrenheit												
<b>Materials</b>	Housing : Aluminium, black anodised (individual colors available) Clampings : High quality brass Piston : POM Spring : Spring steel Sealings : NBR/Ultrathan												
<b>Medium</b>	filtered, lubricated or filtered, unlubricated compressed air												
<b>Important Note</b>	Do not use in safety equipment, not approved as safety element												

## Order Code



## Overview Product Range

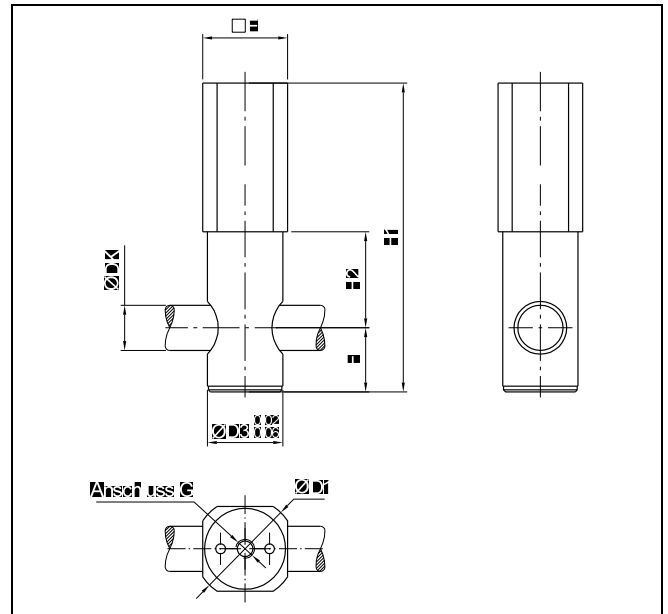
Cylinder-Ø [mm]	Piston Rod-Ø DK [mm]	Retaining force [N]	Ø D1	Ø D3	E	F	G	H1	H2
12	6	200	22	16	18,5	9,5	M5	58	10,5
16	6	200	22	16	18,5	9,5	M5	58	10,5
20	8	350	25	20	20,5	11,5	M5	64,5	17
25	10	400	25	20	20,5	11,5	M5	64,5	17
32	12	600	29	20	25	17	G $\frac{1}{8}$ "	82	25,5
40	16	1000	30	24	27,5	19,5	G $\frac{1}{8}$ "	89	29,5
50	20	1500	36	30	32,5	22,5	G $\frac{1}{8}$ "	106	35,5
63	20	2200	44	38	41	25	G $\frac{1}{8}$ "	116,5	43
80	25	3000	51,5	40	49	30	G $\frac{1}{8}$ "	148	53
100	25	5000	55	48	53	30	G $\frac{1}{8}$ "	154,5	65,5
125	32	7000	67,5	65	65	34	G $\frac{1}{8}$ "	178,5	75,5
160	40	12000	100	100	97	50	G $\frac{1}{4}$ "	258,5	-
200	40	12000	100	100	97	50	G $\frac{1}{4}$ "	258,5	-

## Retaining Force

Cylinder-Ø [mm]	Piston Rod-Ø Tol. (f8,h9) [mm]	FEL-P [N]
12	6	200
16	6	200
20	8	350
25	10	400
32	12	600
40	16	1000
50	20	1500
63	20	2200
80	25	5000 / 3000
100	25	5000
125	32	7500
160	40	12000
200	40	12000

## Passiv Version

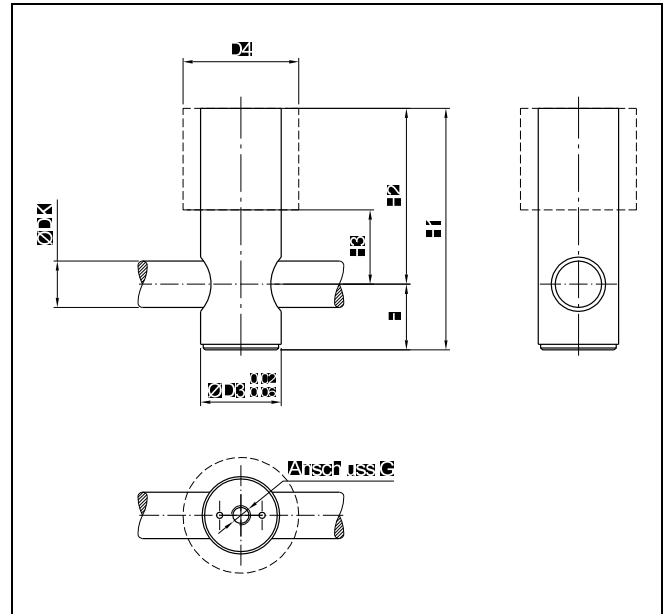
### Dimensions Locking cartridge whit sensing FEL-PP...



Cylinder- Ø [mm]	Piston Rod-Ø DK [mm]	Retaining force [N]	Ø D1	Ø D3	E	F	G	H1	H2
12	6	200	22	16	18,5	9,5	M5	58	10,5
16	6	200	22	16	18,5	9,5	M5	58	10,5
20	8	350	25	20	20,5	11,5	M5	64,5	17
25	10	400	25	20	20,5	11,5	M5	64,5	17
32	12	600	29	20	25	17	G $\frac{1}{8}$ "	82	25,5
40	16	1000	30	24	27,5	19,5	G $\frac{1}{8}$ "	89	29,5
50	20	1500	36	30	32,5	22,5	G $\frac{1}{8}$ "	106	35,5
63	20	2200	44	38	41	25	G $\frac{1}{8}$ "	116,5	43
80	25	3000	51,5	40	49	30	G $\frac{1}{8}$ "	148	53
100	25	5000	55	48	53	30	G $\frac{1}{8}$ "	154,5	65,5
125	32	7000	67,5	65	65	34	G $\frac{1}{8}$ "	178,5	75,5
160	40	12000	100	100	97	50	G $\frac{1}{4}$ "	258,5	-
200	40	12000	100	100	97	50	G $\frac{1}{4}$ "	258,5	-

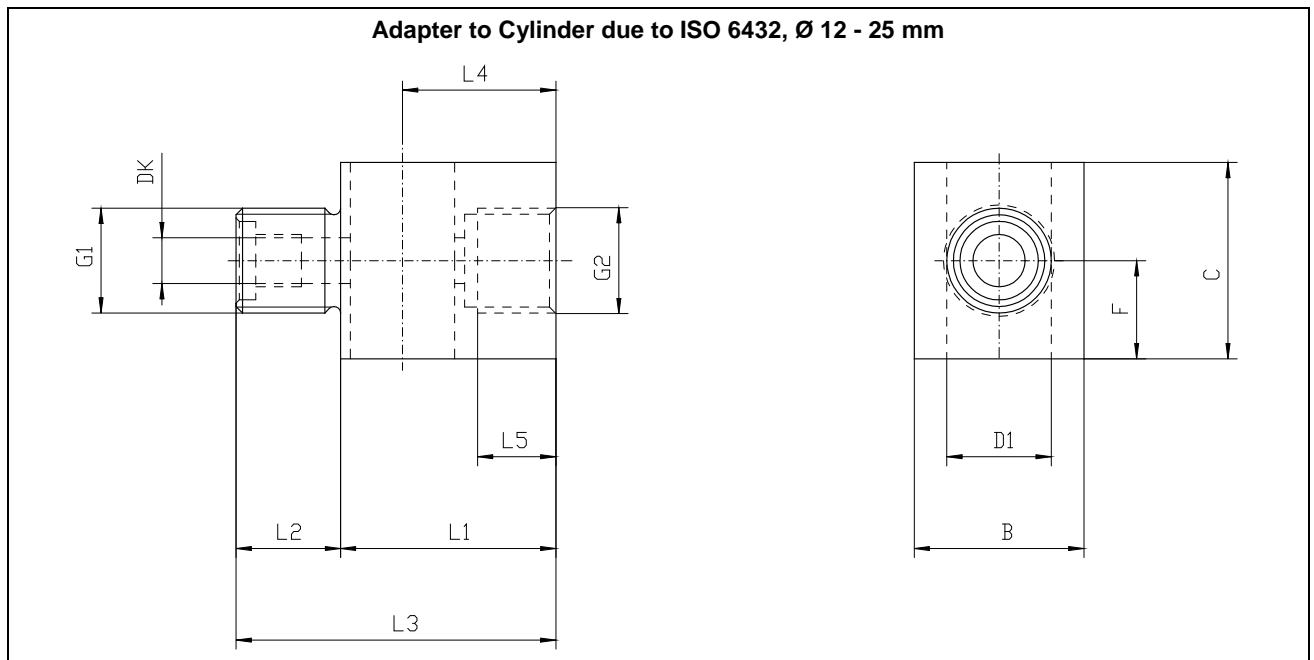
## Passiv Version

### Dimensions Locking cartridge without sensing FEL-PP...



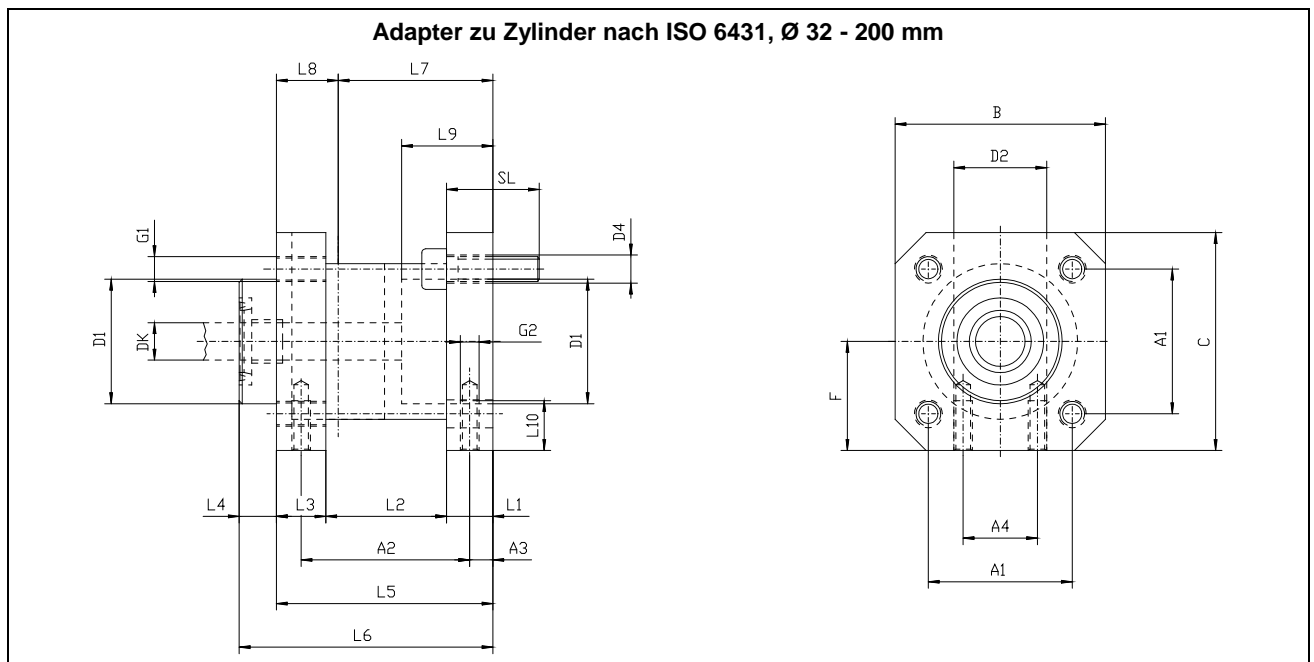
Cylinder- Ø [mm]	Piston Rod-Ø DK [mm]	Retaining force [N]	Ø D3	Ø D4	F	G	H1	H2	H3
12	6	200	16	-	9,5	M5	53	43,5	-
16	6	200	16	-	9,5	M5	53	43,5	-
20	8	350	20	-	11,5	M5	57	45,5	-
25	10	400	20	-	11,5	M5	57	45,5	-
32	12	600	20	25	17	G $\frac{1}{8}$ "	76	45,5	25,5
40	16	1000	24	-	19,5	G $\frac{1}{8}$ "	81	61,5	-
50	20	1500	30	-	22,5	G $\frac{1}{8}$ "	98	75,5	-
63	20	2200	38	-	25	G $\frac{1}{8}$ "	111	86	-
80	25	5000	48	-	30	G $\frac{1}{8}$ "	149	119	-
100	25	5000	48	-	30	G $\frac{1}{8}$ "	149	119	-
125	32	7500	65	-	34	G $\frac{1}{8}$ "	174	140	-
160	40	12000	100	-	50	G $\frac{1}{4}$ "	258,5	208,5	-
200	40	12000	100	-	50	G $\frac{1}{4}$ "	258,5	208,5	-

## Adapter dimensions



Cylinder- Ø [mm]	Piston Rod-Ø DK [mm]	B	C	D1	F	G1	G2	L1	L2	L3	L4	L5
12	6	20	20	16	10	M16x1,5	M16x1,5	30	12	42	21	13
16	6	20	20	16	10	M16x1,5	M16x1,5	30	12	42	21	13
20	8	27	33	20	16,5	M22x1,5	M22x1,5	35	23	58	24	14
25	10	27	33	20	16,5	M22x1,5	M22x1,5	35	23	58	24	14

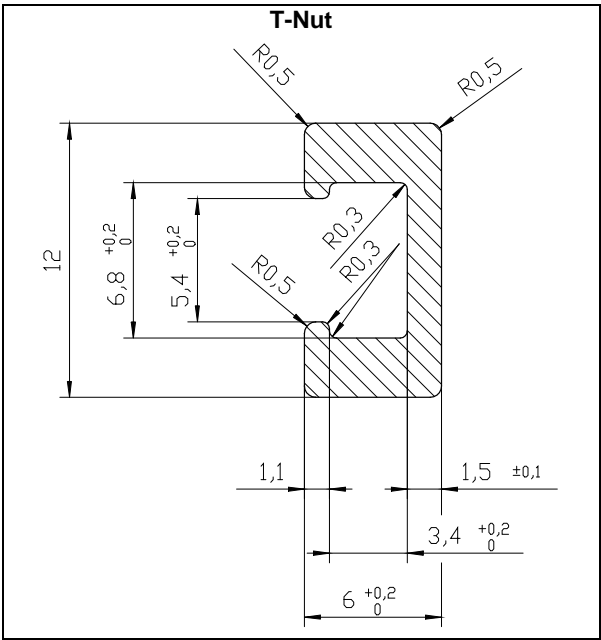
## Adapter dimensions



Cylinder-Ø [mm]	Piston Rod-Ø DK [mm]	A1	A2	A3	B	C	D1	D2	D4	F	G1	G2	L1	L2	L3	L4	L5	L6	L7	L8	L9	L10	SL
32	12	32,5	40	4,2	16	48	30	20	6,6	25	M6	M5	8	28	12	10	48	58	32	16	20,5	8	20
40	16	38	46	4,5	21	56	35	24	6,6	29	M6	M5	10	33	12	10	55	65	35,5	19,5	22,5	10	25
50	20	46,5	54	11,5	24	68	40	30	8,5	35	M8	M6	15	39	16	12	70	82	49	21	29,5	12	30
63	20	56,5	55	7,5	32	82	45	38	8,5	42,5	M8	M8	15	40	15	12	70	82	49	21	29,5	12	30
80	25	72	70	10	44	100	45	40	11	52,5	M10	M8	16	58	16	20	90	110	62	28	35,5	16	30
100	25	89	70	10	60	120	55	48	11	65	M10	M8	16	58	18	23	92	115	65	27	38,5	16	30
125	32	110	95	11	75	140	60	65	13	75	M12	M10	25	70	27	32	122	154	85	37	51	20	45
160	40	140	137	12,5	98	180	65	100	17	90	M16	M16	25	103	37	30	165	195	111	54	61	24	55
200	40	175	147	15	120	225	75	100	17	112,5	M16	M20	30	117	30	30	177	207	118	59	68	30	65

# Sensor holder dimensions

Sensor holder dimensions

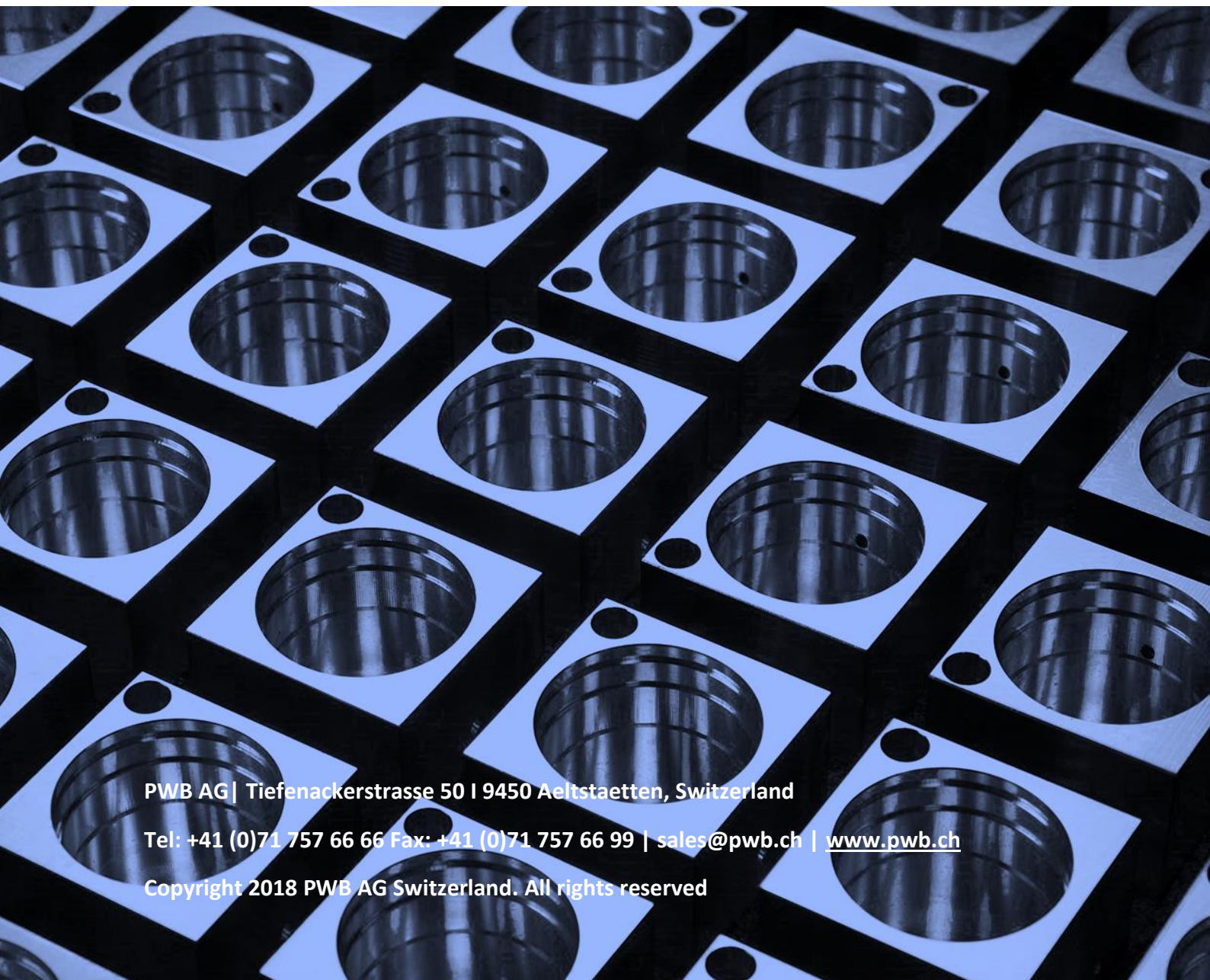


Required piston rod extension

Cylinder-Ø [mm]	Extension [mm]
12	35
16	35
20	50
25	50
32	43
40	46
50	60
63	60
80	80
100	82
125	110
160	138
200	138



*Store this document in a safe place and  
pass it on to any end customer!*



PWB AG | Tiefenackerstrasse 50 | 9450 Aeltstaetten, Switzerland

Tel: +41 (0)71 757 66 66 Fax: +41 (0)71 757 66 99 | [sales@pwb.ch](mailto:sales@pwb.ch) | [www.pwb.ch](http://www.pwb.ch)

Copyright 2018 PWB AG Switzerland. All rights reserved